

Key Headlines – Apprenticeship and levy statistics: July 2018

At 31 May 2018, there have been a total of 14,200 apprenticeship service accounts registered.

At 31 May 2018, there have been a total of 174,400 commitments entered into the apprenticeship service. Of these, 165,400 were fully agreed.

There have been 290,500 apprenticeship starts reported to date between August 2017 and April 2018 for the 2017/18 academic year.

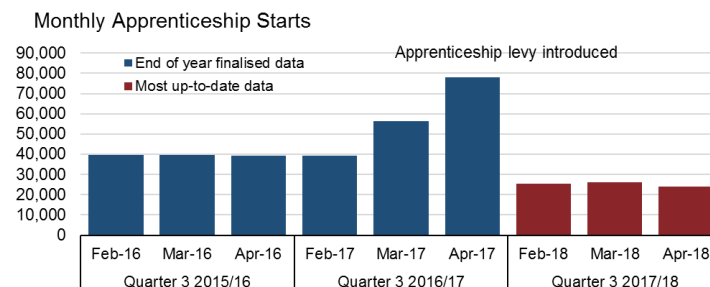
This is a 34.0 per cent decrease compared to the equivalent period in 2016/17 (440,300) and a decrease of 24.5% compared to 2015/16 (384,500).

PLEASE NOTE: Quarterly apprenticeship starts data provide a more robust basis than monthly starts for interpreting how figures relate to historical trends.

Quarterly figures (August 2017 to April 2018) relating to the monthly starts detailed in this publication are described in greater detail in the [Apprenticeships and traineeships release: July 2018](#).

There was an increase in apprenticeship starts preceding the introduction of the apprenticeship levy in April 2017. The following figure highlights this by showing monthly apprenticeship starts for quarter 3 in each academic year since 2015/16.

Quarter 3 apprenticeship starts (by month) from 2015/16 onwards



The proportion of public sector apprenticeship starts of all apprenticeship starts between May 2017 and April 2018 is estimated at 13 per cent.

This compares to 12% reported for the period between May 2017 and January 2018 in an Education Select Committee. *This data does not allow us to officially monitor progress towards the public sector apprenticeship target, but is indicative of the expected number of starts based on an internal mapping of public bodies.*

Key Headlines – Apprenticeships and Traineeships Release Aug-April 2017/18 Data (reported to date)

Key points

- Apprenticeship starts reported so far for the first three quarters of 17/18 decreased by 34.0 per cent in comparison to figures reported at this time in 2016/17, and decreased by 24.5 per cent in comparison to this time in 2015/16. The decrease can be seen in all age groups. However, starts for higher levels are up 12.5 per cent on 2016/17 data.
- There have been 1.41m apprenticeship starts since May 2015, and 3.79m starts since May 2010 reported to date.
- Participation in apprenticeships has also seen a decrease of 14.4 per cent compared to 2016/17 (Aug-Apr) and 7.5 per cent compared to 2015/16 (Aug-Apr).

- 290,500 apprenticeship starts** reported so far for 17/18 (decrease of 34.0% from 16/17)
- 753,200 participated on an apprenticeship** reported so far for 17/18 (decrease of 14.4% from 16/17)
- 137,200 **levy supported starts** have been reported so far for 17/18; **158,300 since the introduction of the apprenticeship levy in April 2017**.
- 119,500 starts on **apprenticeship standards**; **148,900 starts** since their introduction in September 2014.
- The **Apprenticeship Service** data saw 14,200 registered accounts and 174,400 commitments (with 165,400 fully agreed) as at 31 May 2018.
- Traineeship starts** reported so far for 17/18 totalled 15,000, down on the 17,000 in 16/17.

	Final year	August to April		
Apprenticeships	16/17	15/16	16/17	17/18
Starts	495k	385k	440k	291k
- of which intermediate	261k	220k	233k	127k
- of which advanced	198k	145k	176k	128k
- of which higher	37k	19k	32k	36k
- of which aged U19	123k	109k	109k	90k
- of which aged 19-24	142k	118k	125k	89k
- of which aged 25+	230k	157k	206k	111k
Participation	909k	814k	880k	753k

	Final year	August to April	
Traineeships	16/17	16/17	17/18
Starts	20k	17k	15k
Completions	17k	11k	9k
Progressions	10k	6k	5k

<p>1,427,500 reported starts for May 2015 to May 2018 (this Parliament)</p>		<p>47.6% of 3m 3m target covers 68-month-period and the above figure relates to the end of the 37th month (54% of the time period)</p>		<p>Current central estimate: 2.6m starts by December 2020 3m starts by October 2021 (as forecast in May 2018)</p>	
<p>308,000 starts between August 2017 and May 2018 (this academic year)</p>		<p>31.1% decrease in starts in August 2017 to May 2018 compared to the previous year (31.8% last month)</p>		<p>of all apprenticeship starts in 2017/18 44% in Intermediate Level 44% in Advanced Level 12% in Higher apprenticeships</p>	
<p>Comparing August 2017 to May 2018 apprenticeship starts with the same period a year earlier:</p>					
<p>Under 19s down 15.4%</p>	<p>19-24 down 26.4%</p>	<p>25+ down 42.2%</p>	<p>Intermediate level down 43.3%</p>	<p>Advanced level down 23.7%</p>	<p>Higher levels up 17.5%</p>
<p>11.0% BAME of reported starts from August 2017 to May 2018 compared to 10.0% for the same period last year Target by 2020: 11.9%</p>			<p>129,100 starts on standards from August 2017 to May 2018 42% of total starts compared to 26% projection (158,400 since introduction)</p>		

To Note: Reported to date (R10) provides an early view of performance in August 2017 to May 2018. Figures will change throughout the academic year as providers submit further returns. Caution must be taken when comparing against data from earlier periods due to the provisional nature of the data. Provisional data from the same point in 2016/17 (R10) is used as a comparator.

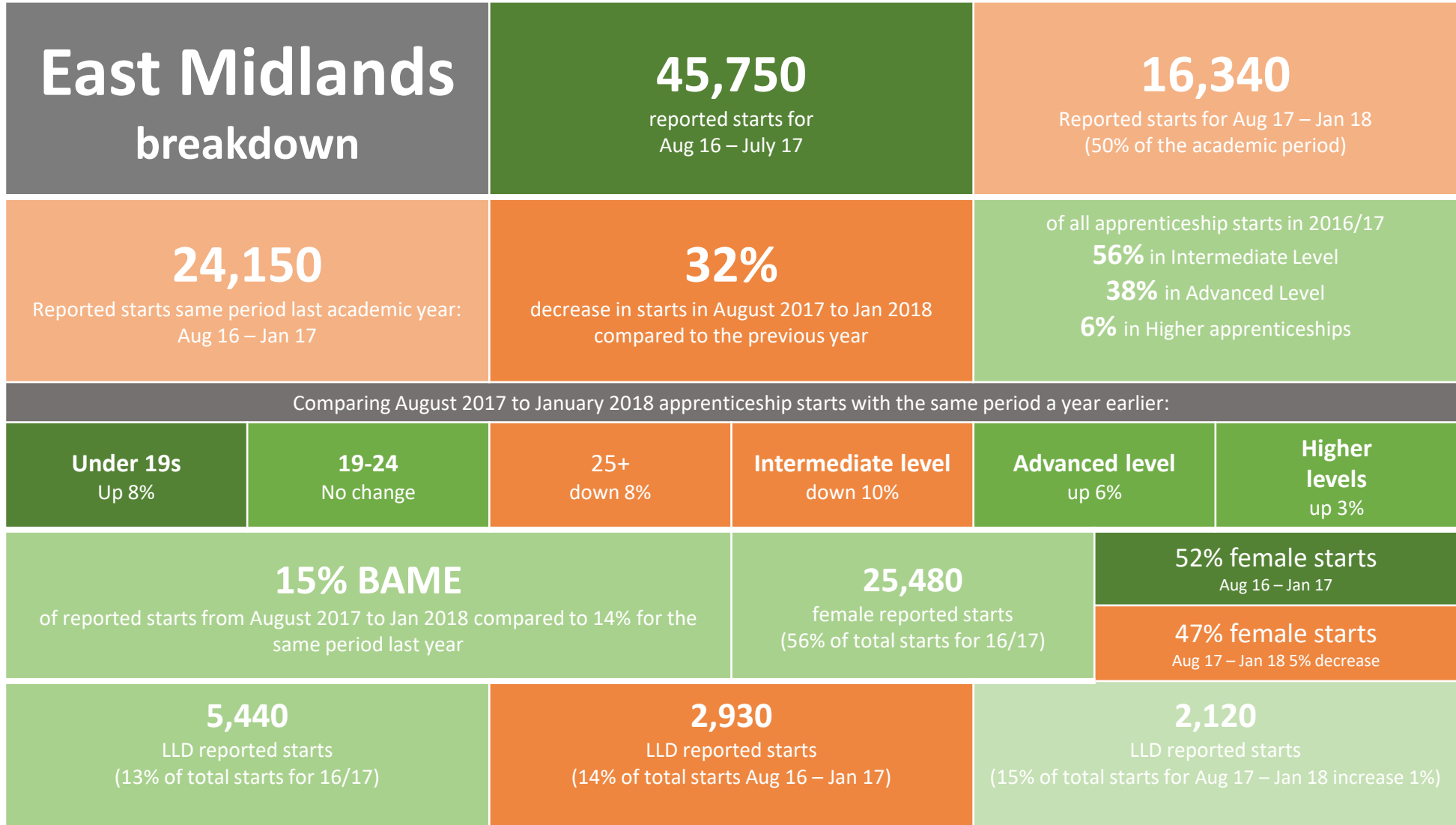
Starts by region

Starts	Dataset			Start diff	%
	2016/17, Collection R14	2016/17, Collection R06	2017/18, Collection R06		
SCD2 Region SFR					
East Midlands	45,750	24,150	16,340	-7,810	32%
East of England	43,470	23,130	17,980	-5,150	23%
London	46,750	22,890	19,400	-3,490	16%
North East	33,590	17,370	11,600	-5,770	34%
North West	79,510	40,150	29,820	-10,330	26%
Other	5,330	4,010	6,820	2,810	59%
South East	62,860	32,810	24,730	-8,080	25%
South West	52,770	28,510	22,500	-6,010	21%
West Midlands	61,190	32,110	21,740	-10,370	32%
Yorkshire and The Humber	63,660	33,690	23,200	-10,490	32%
Grand Total	494,880	258,820	194,130	-64,690	25%

*Starts are rounded to the nearest 10

East Midlands region starts by ward

Starts	Dataset			Start Diff	%
	2016/17, Collection R14	2016/17, Collection R06	2017/18, Collection R06		
SCD2 LEA UK Description					
Derby	3,360	1,719	1,331	-388	23%
Derbyshire	7,401	3,923	2,377	-1,546	39%
Leicester	3,112	1,562	1,192	-370	24%
Leicestershire	6,456	3,539	2,613	-926	26%
Lincolnshire	6,292	3,484	2,512	-972	28%
Northamptonshire	6,587	3,381	2,179	-1,202	34%
Nottingham	4,053	2,142	1,430	-712	33%
Nottinghamshire	8,174	4,246	2,605	-1,641	39%
Rutland	318	151	96	-55	36%
Grand Total	45,753	24,147	16,335	-7,812	32%



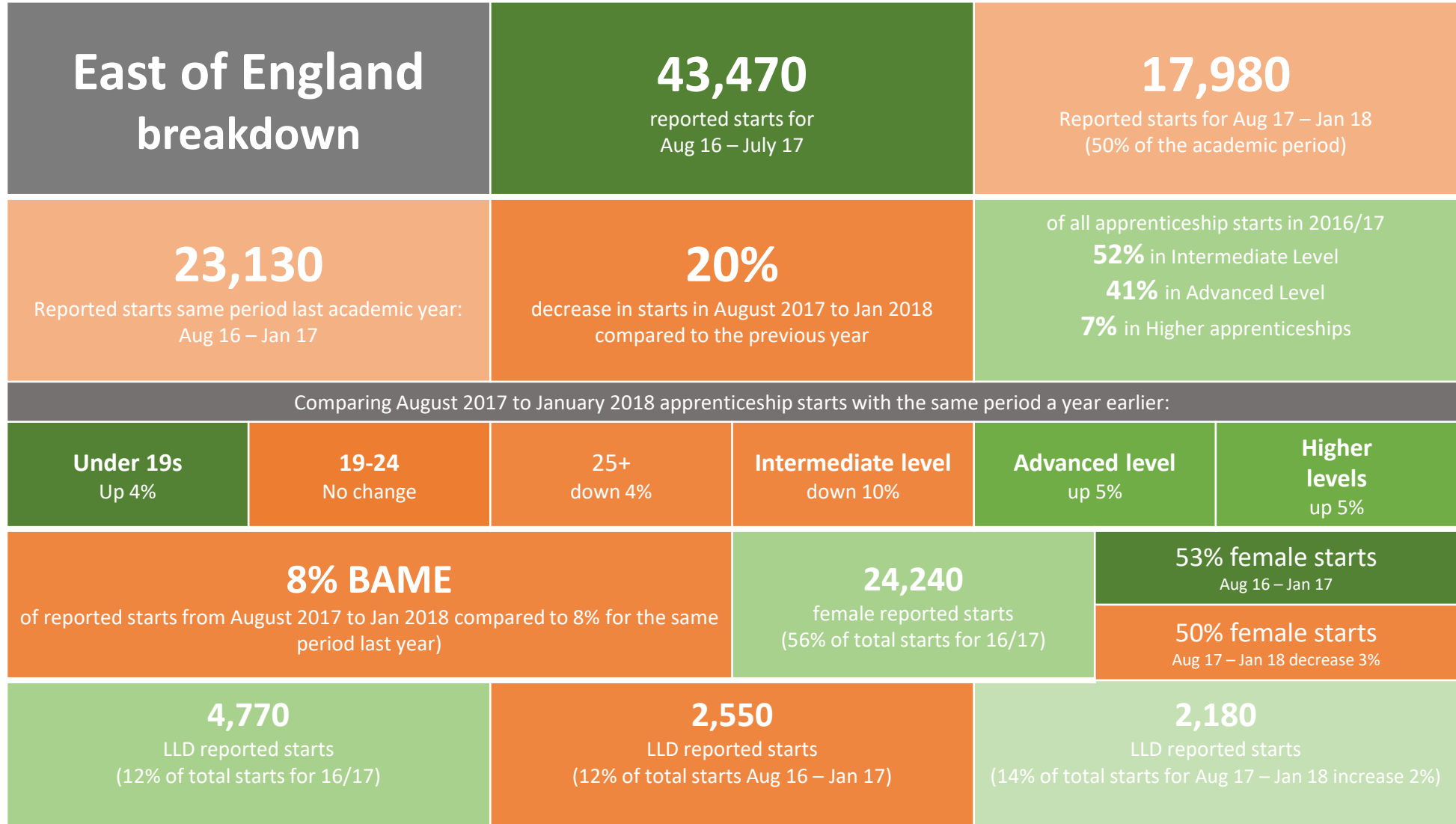
Starts by region

Starts	Dataset			Start diff	%
	2016/17, Collection R14	2016/17, Collection R06	2017/18, Collection R06		
SCD2 Region SFR					
East Midlands	45,750	24,150	16,340	-7,810	32%
East of England	43,470	23,130	17,980	-5,150	23%
London	46,750	22,890	19,400	-3,490	16%
North East	33,590	17,370	11,600	-5,770	34%
North West	79,510	40,150	29,820	-10,330	26%
Other	5,330	4,010	6,820	2,810	59%
South East	62,860	32,810	24,730	-8,080	25%
South West	52,770	28,510	22,500	-6,010	21%
West Midlands	61,190	32,110	21,740	-10,370	32%
Yorkshire and The Humber	63,660	33,690	23,200	-10,490	32%
Grand Total	494,880	258,820	194,130	-64,690	25%

*Starts are rounded to the nearest 10

East of England region starts by ward

Starts	Dataset			Start diff	%
	2016/17, Collection R14	2016/17, Collection R06	2017/18, Collection R06		
SCD2 LEA UK Description					
Bedford	1,430	810	560	-250	31%
Cambridgeshire	4,300	2,390	1,810	-580	24%
Central Bedfordshire	1,380	700	560	-140	20%
Essex	10,710	5,470	4,300	-1170	21%
Hertfordshire	7,370	3,700	2,940	-760	21%
Luton	1,530	690	620	-70	10%
Norfolk	6,710	3,690	3,150	-540	15%
Peterborough	2,160	1,240	880	-360	29%
Southend on Sea	1,310	690	480	-210	30%
Suffolk	5,770	3,370	2,340	-1030	31%
Thurrock	810	390	350	-40	10%
Grand Total	43,470	23,130	17,980	-5150	22%



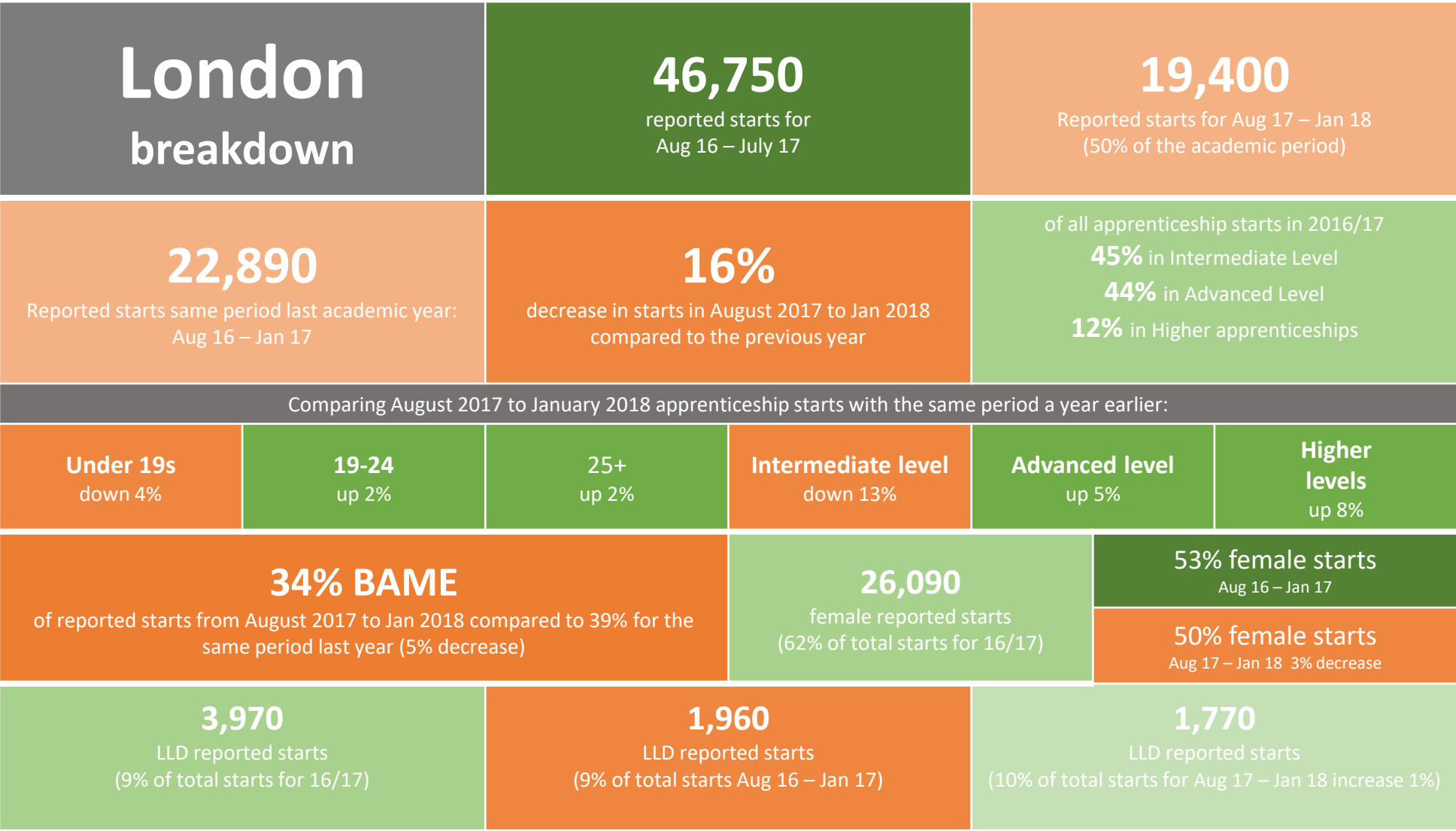
Starts by region

Starts	Dataset			Start diff	%
	2016/17, Collection R14	2016/17, Collection R06	2017/18, Collection R06		
SCD2 Region SFR					
East Midlands	45,750	24,150	16,340	-7,810	32%
East of England	43,470	23,130	17,980	-5,150	23%
London	46,750	22,890	19,400	-3,490	16%
North East	33,590	17,370	11,600	-5,770	34%
North West	79,510	40,150	29,820	-10,330	26%
Other	5,330	4,010	6,820	2,810	59%
South East	62,860	32,810	24,730	-8,080	25%
South West	52,770	28,510	22,500	-6,010	21%
West Midlands	61,190	32,110	21,740	-10,370	32%
Yorkshire and The Humber	63,660	33,690	23,200	-10,490	32%
Grand Total	494,880	258,820	194,130	-64,690	25%

*Starts are rounded to the nearest 10

London region starts by ward

Starts	Dataset			Start diff	%
	2016/17, Collection R14	2016/17, Collection R06	2017/18, Collection R06		
SCD2 LEA UK Description					
Barking and Dagenham	1,530	660	440	-220	33%
Barnet	1,070	530	440	-90	17%
Bexley	1,380	640	410	-230	36%
Brent	1,490	670	670	0	0%
Bromley	1,460	700	620	-80	11%
Camden	2,430	1,190	1,140	-50	4%
City of London	2,140	1,280	1,560	280	22%
Croydon	1,780	950	630	-320	34%
Ealing	1,400	860	510	-350	41%
Enfield	1,390	720	680	-40	6%
Greenwich	1,430	640	400	-240	37%
Hackney	920	370	280	-90	24%
Hammersmith and Fulham	1,170	600	410	-190	32%
Haringey	1,380	640	570	-70	11%
Harrow	730	340	260	-80	24%
Havering	1,420	810	600	-210	26%
Hillingdon	2,090	990	940	-50	5%
Hounslow	1,180	570	520	-50	9%
Islington	1,460	670	600	-70	10%
Kensington and Chelsea	440	190	220	30	16%
Kingston upon Thames	630	340	330	-10	3%
Lambeth	1,360	670	620	-50	7%
Lewisham	1,140	530	320	-210	40%
Merton	600	290	210	-80	28%
Newham	1,880	940	530	-410	44%
Redbridge	1,320	580	350	-230	40%
Richmond upon Thames	770	430	320	-110	26%
Southwark	2,760	1,100	1,000	-100	8%
Sutton	830	490	280	-210	43%
Tower Hamlets	1,770	760	780	20	3%
Waltham Forest	1,150	460	290	-170	37%
Wandsworth	1,030	470	520	50	11%
Westminster	3,220	1,840	1,960	120	7%
Grand Total	46,750	22,890	19,400	-3490	15%



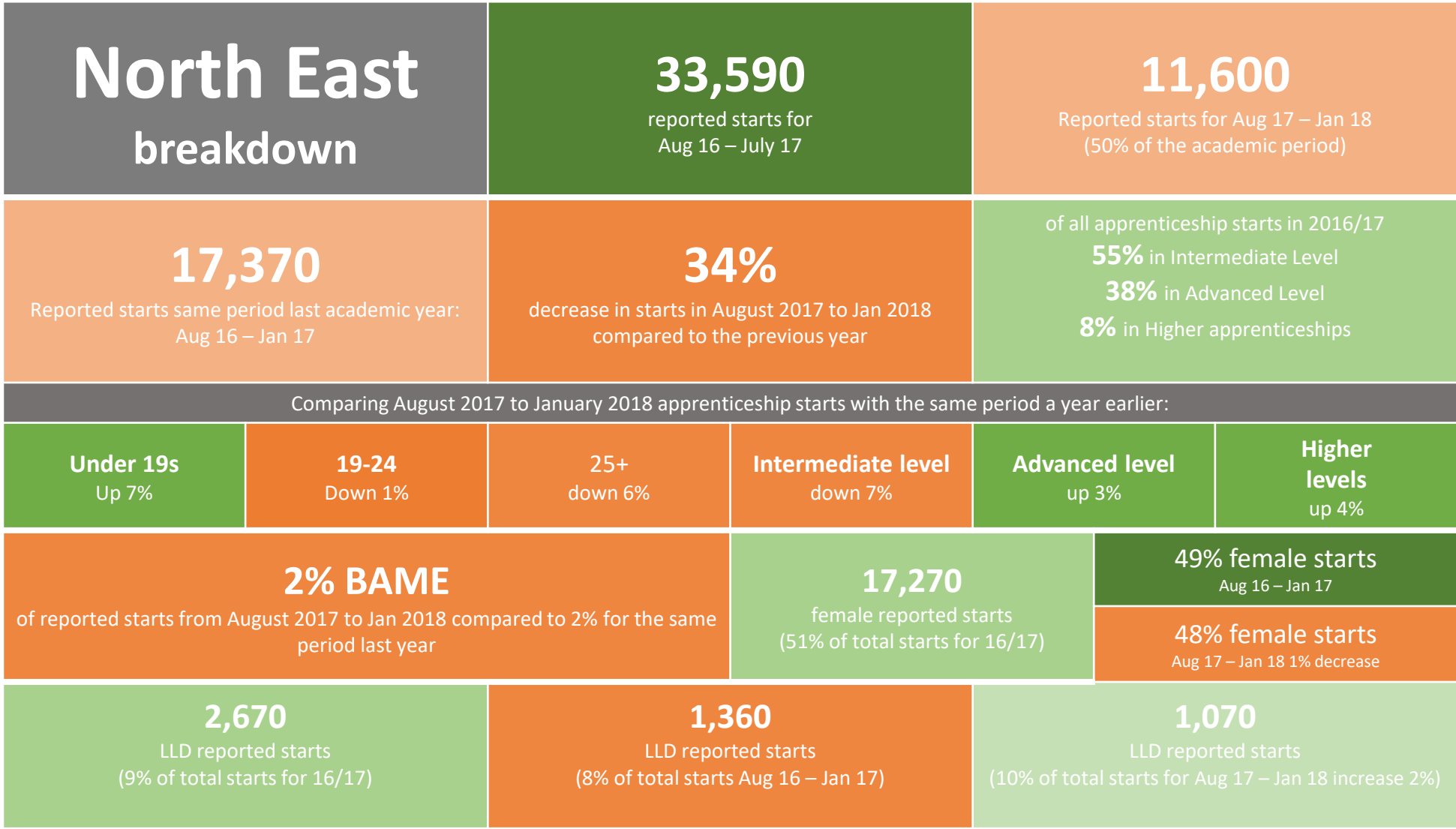
Starts by region

Starts	Dataset			Start diff	%
	2016/17, Collection R14	2016/17, Collection R06	2017/18, Collection R06		
SCD2 Region SFR					
East Midlands	45,750	24,150	16,340	-7,810	32%
East of England	43,470	23,130	17,980	-5,150	23%
London	46,750	22,890	19,400	-3,490	16%
North East	33,590	17,370	11,600	-5,770	34%
North West	79,510	40,150	29,820	-10,330	26%
Other	5,330	4,010	6,820	2,810	59%
South East	62,860	32,810	24,730	-8,080	25%
South West	52,770	28,510	22,500	-6,010	21%
West Midlands	61,190	32,110	21,740	-10,370	32%
Yorkshire and The Humber	63,660	33,690	23,200	-10,490	32%
Grand Total	494,880	258,820	194,130	-64,690	25%

*Starts are rounded to the nearest 10

North East region starts by ward

Starts	Dataset			Start diff	%
	2016/17, Collection R14	2016/17, Collection R06	2017/18, Collection R06		
SCD2 LEA UK Description					
Darlington	1,690	960	660	-300	31%
Durham	6,110	3,330	1,990	-1340	40%
Gateshead	2,560	1,390	920	-470	34%
Hartlepool	1,190	650	480	-170	26%
Middlesbrough	2,090	1,100	810	-290	26%
Newcastle upon Tyne	3,700	1,870	1,360	-510	27%
North Tyneside	2,330	1,250	900	-350	28%
Northumberland	3,380	1,580	1,060	-520	33%
Redcar and Cleveland	1,600	820	600	-220	27%
South Tyneside	1,530	800	470	-330	41%
Stockton-on-Tees	2,640	1,260	760	-500	40%
Sunderland	4,800	2,360	1,600	-760	38%
Grand Total	33,590	17,370	11,600	-5770	33%



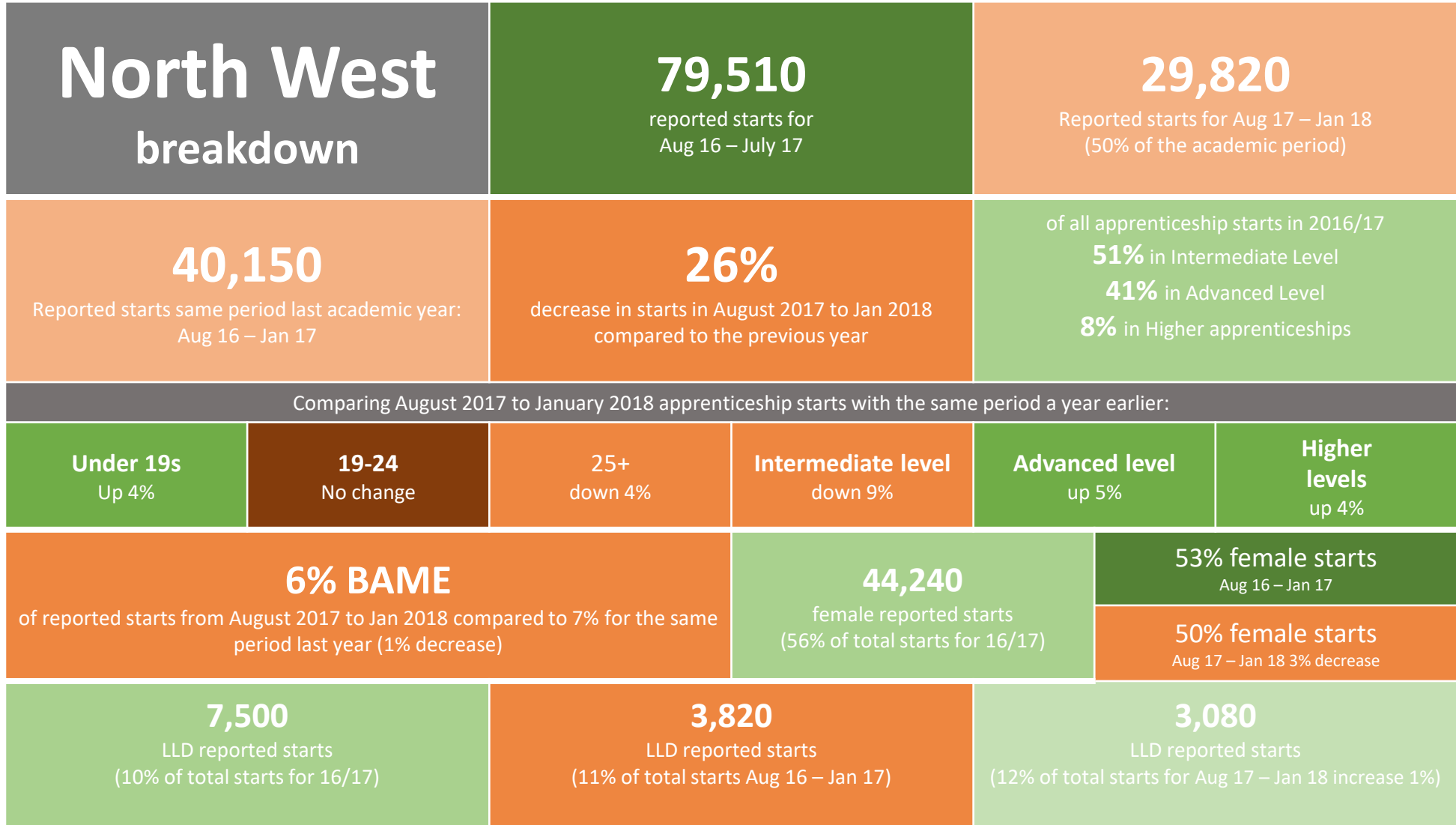
Starts by region

Starts	Dataset			Start diff	%
	2016/17, Collection R14	2016/17, Collection R06	2017/18, Collection R06		
SCD2 Region SFR					
East Midlands	45,750	24,150	16,340	-7,810	32%
East of England	43,470	23,130	17,980	-5,150	23%
London	46,750	22,890	19,400	-3,490	16%
North East	33,590	17,370	11,600	-5,770	34%
North West	79,510	40,150	29,820	-10,330	26%
Other	5,330	4,010	6,820	2,810	59%
South East	62,860	32,810	24,730	-8,080	25%
South West	52,770	28,510	22,500	-6,010	21%
West Midlands	61,190	32,110	21,740	-10,370	32%
Yorkshire and The Humber	63,660	33,690	23,200	-10,490	32%
Grand Total	494,880	258,820	194,130	-64,690	25%

*Starts are rounded to the nearest 10

North West region starts by ward

Starts	Dataset			Start diff	%
	2016/17, Collection R14	2016/17, Collection R06	2017/18, Collection R06		
SCD2 LEA UK Description					
Blackburn with Darwen	1,860	990	710	-280	28%
Blackpool	1,670	810	580	-230	28%
Bolton	2,760	1,380	920	-460	33%
Bury	1,540	780	640	-140	18%
Cheshire East	3,860	2,100	1,350	-750	36%
Cheshire West and Chester	3,790	2,000	1,230	-770	38%
Cumbria	5,810	3,310	2,580	-730	22%
Halton	1,070	540	380	-160	30%
Knowsley	2,310	1,160	490	-670	58%
Lancashire	13,670	6,850	4,790	-2060	30%
Liverpool	6,090	2,970	1,790	-1180	40%
Manchester	5,910	3,050	3,140	90	3%
Oldham	2,460	1,120	870	-250	22%
Rochdale	2,120	1,040	830	-210	20%
Salford	2,370	1,070	890	-180	17%
Sefton	2,800	1,240	850	-390	21%
St Helens	2,030	1,040	720	-320	21%
Stockport	3,030	1,480	1,380	-100	7%
Tameside	1,800	930	660	-270	29%
Trafford	2,870	1,350	1,180	-170	13%
Warrington	2,820	1,470	1,180	-290	20%
Wigan	3,350	1,730	1,450	-280	16%
Wirral	3,520	1,760	1,230	-530	30%
Grand Total	79,510	40,150	29,820	-10330	26%



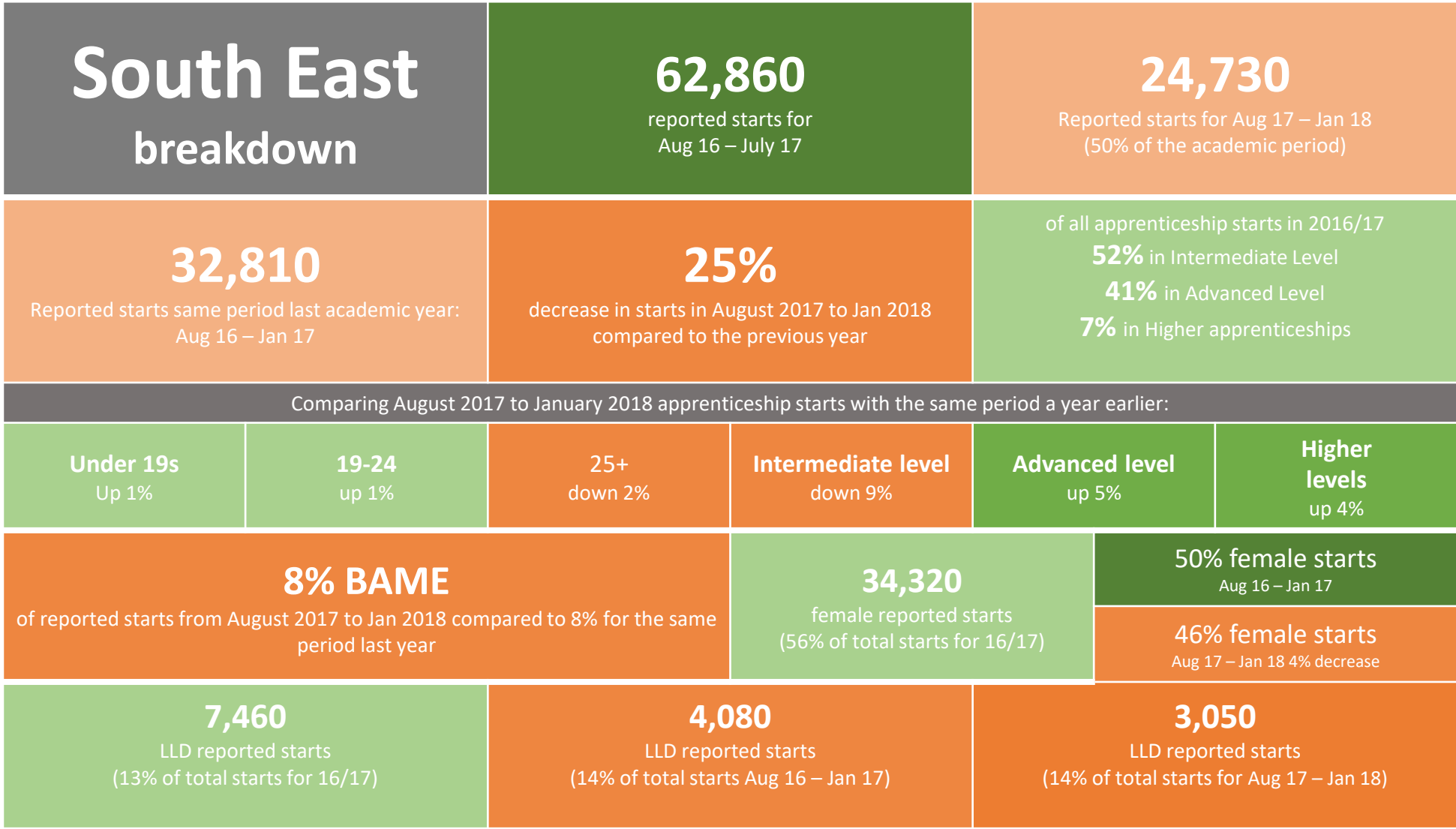
Starts by region

Starts	Dataset			Start diff	%
	2016/17, Collection R14	2016/17, Collection R06	2017/18, Collection R06		
SCD2 Region SFR					
East Midlands	45,750	24,150	16,340	-7,810	32%
East of England	43,470	23,130	17,980	-5,150	23%
London	46,750	22,890	19,400	-3,490	16%
North East	33,590	17,370	11,600	-5,770	34%
North West	79,510	40,150	29,820	-10,330	26%
Other	5,330	4,010	6,820	2,810	59%
South East	62,860	32,810	24,730	-8,080	25%
South West	52,770	28,510	22,500	-6,010	21%
West Midlands	61,190	32,110	21,740	-10,370	32%
Yorkshire and The Humber	63,660	33,690	23,200	-10,490	32%
Grand Total	494,880	258,820	194,130	-64,690	25%

*Starts are rounded to the nearest 10

South East region starts by ward

Starts	Dataset			Start diff	%
	2016/17, Collection R14	2016/17, Collection R06	2017/18, Collection R06		
SCD2 LEA UK Description					
Bracknell Forest	630	330	370	40	12%
Brighton and Hove	1,820	940	570	-370	39%
Buckinghamshire	2,780	1,440	910	-530	37%
Croydon	0	0	0	0	0%
East Sussex	3,660	1,830	1,140	-690	38%
Hampshire	12,540	6,580	5,140	-1440	22%
Isle of Wight	1,560	670	530	-140	21%
Kent	10,420	5,230	3,700	-1530	29%
Medway	2,280	1,050	1,060	10	1%
Milton Keynes	2,380	1,210	840	-370	31%
Oxfordshire	4,150	2,420	1,910	-510	21%
Portsmouth	2,100	1,200	980	-220	18%
Reading	1,560	890	670	-220	25%
Slough	1,000	610	470	-140	23%
Southampton	2,100	1,180	730	-450	38%
Surrey	5,540	3,040	2,330	-710	23%
West Berkshire	1,040	580	530	-50	9%
West Sussex	5,860	2,890	2,180	-710	25%
Windsor and Maidenhead	840	430	370	-60	14%
Wokingham	590	290	320	30	10%
Grand Total	62,860	32,810	24,730	-8080	25%



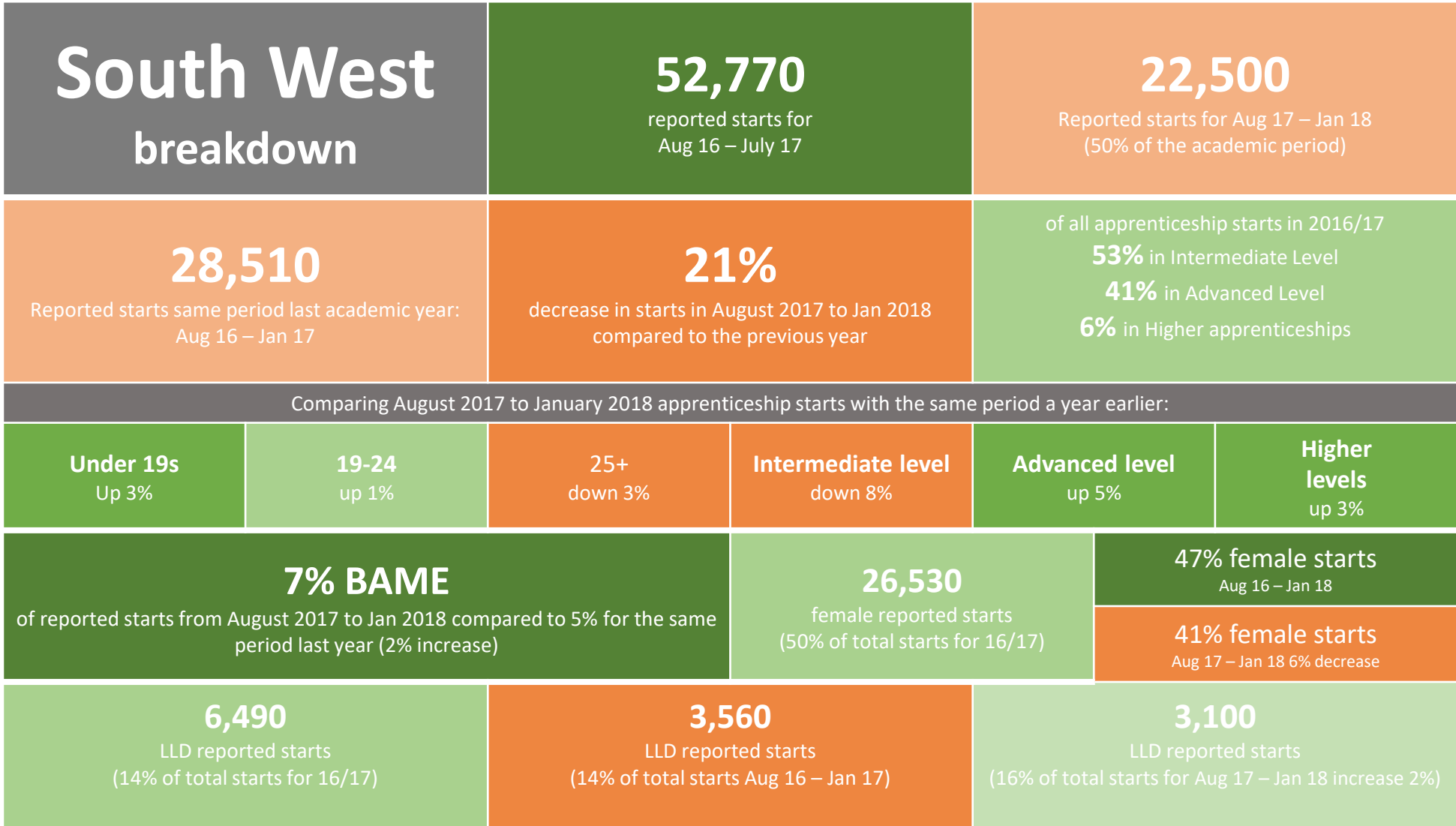
Starts by region

Starts	Dataset			Start diff	%
	2016/17, Collection R14	2016/17, Collection R06	2017/18, Collection R06		
SCD2 Region SFR					
East Midlands	45,750	24,150	16,340	-7,810	32%
East of England	43,470	23,130	17,980	-5,150	23%
London	46,750	22,890	19,400	-3,490	16%
North East	33,590	17,370	11,600	-5,770	34%
North West	79,510	40,150	29,820	-10,330	26%
Other	5,330	4,010	6,820	2,810	59%
South East	62,860	32,810	24,730	-8,080	25%
South West	52,770	28,510	22,500	-6,010	21%
West Midlands	61,190	32,110	21,740	-10,370	32%
Yorkshire and The Humber	63,660	33,690	23,200	-10,490	32%
Grand Total	494,880	258,820	194,130	-64,690	25%

*Starts are rounded to the nearest 10

South West region starts by ward

Starts	Dataset			Start diff	%
	2016/17, Collection R14	2016/17, Collection R06	2017/18, Collection R06		
SCD2 LEA UK Description					
Bath and North East Somerset	1,260	720	600	-120	17%
Bournemouth	1,620	920	470	-450	49%
Bristol	3,470	1,920	1,690	-230	18%
Cornwall	5,200	2,840	2,210	-630	22%
Devon	7,730	4,040	3,160	-880	22%
Dorset	4,990	2,420	2,260	-160	7%
Gloucestershire	5,040	2,700	2,430	-270	10%
Isles of Scilly	0	0	0	0	0%
North Somerset	1,560	880	590	-290	33%
Plymouth	3,640	2,060	1,430	-630	31%
Poole	1,810	1,180	500	-680	58%
Somerset	4,830	2,740	2,090	-650	24%
South Gloucestershire	2,450	1,290	1,050	-240	19%
Swindon	1,590	930	820	-110	12%
Torbay	1,690	920	690	-230	25%
Wiltshire	5,900	2,960	2,520	-440	15%
Grand Total	52,770	28,510	22,500	-6010	21%



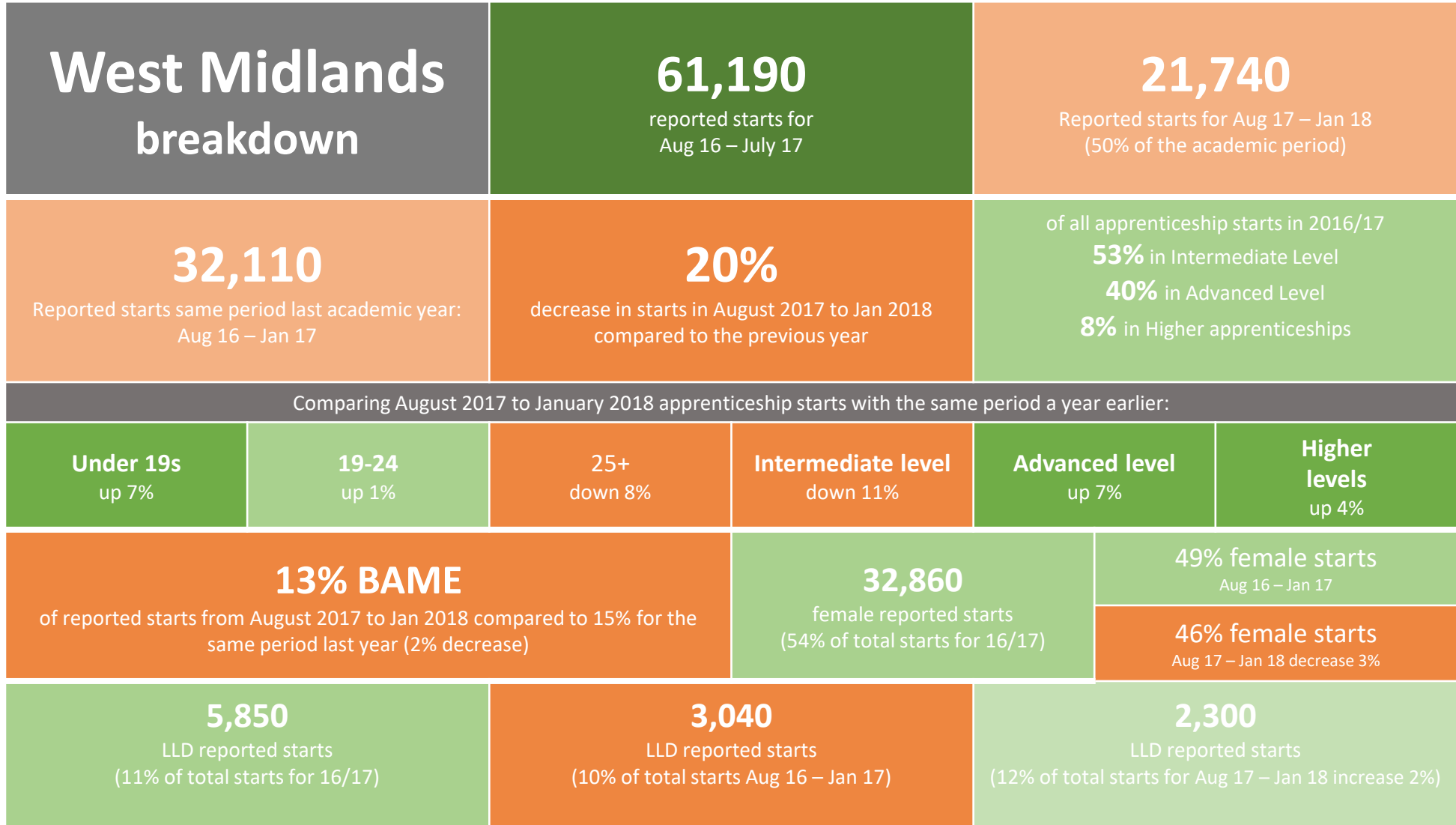
Starts by region

Starts	Dataset			Start diff	%
	2016/17, Collection R14	2016/17, Collection R06	2017/18, Collection R06		
SCD2 Region SFR					
East Midlands	45,750	24,150	16,340	-7,810	32%
East of England	43,470	23,130	17,980	-5,150	23%
London	46,750	22,890	19,400	-3,490	16%
North East	33,590	17,370	11,600	-5,770	34%
North West	79,510	40,150	29,820	-10,330	26%
Other	5,330	4,010	6,820	2,810	59%
South East	62,860	32,810	24,730	-8,080	25%
South West	52,770	28,510	22,500	-6,010	21%
West Midlands	61,190	32,110	21,740	-10,370	32%
Yorkshire and The Humber	63,660	33,690	23,200	-10,490	32%
Grand Total	494,880	258,820	194,130	-64,690	25%

*Starts are rounded to the nearest 10

West Midlands region starts by ward

Starts	Dataset			Start Diff	%
	2016/17, Collection R14	2016/17, Collection R06	2017/18, Collection R06		
SCD2 LEA UK Description					
Birmingham	12,540	6,670	4,380	-2,290	34%
Coventry	3,430	1,670	1,360	-310	19%
Dudley	3,270	1,720	1,160	-560	33%
Herefordshire	1,610	910	610	-300	33%
Sandwell	3,460	1,570	980	-590	38%
Shropshire	3,870	1,740	1,450	-290	17%
Solihull	2,490	2,030	820	-1,210	60%
Staffordshire	9,230	4,930	3,110	-1,820	37%
Stoke-on-Trent	3,050	1,600	1,080	-520	32%
Telford and Wrekin	2,120	1,000	700	-300	30%
Walsall	2,500	1,250	790	-460	47%
Warwickshire	5,690	2,850	2,140	-710	25%
Wolverhampton	2,560	1,300	1,200	-100	8%
Worcestershire	5,380	2,870	1,950	-920	32%
Grand Total	61,190	32,110	21,740	-10,370	32%



Starts by region

Starts	Dataset			Start diff	%
	2016/17, Collection R14	2016/17, Collection R06	2017/18, Collection R06		
SCD2 Region SFR					
East Midlands	45,750	24,150	16,340	-7,810	32%
East of England	43,470	23,130	17,980	-5,150	23%
London	46,750	22,890	19,400	-3,490	16%
North East	33,590	17,370	11,600	-5,770	34%
North West	79,510	40,150	29,820	-10,330	26%
Other	5,330	4,010	6,820	2,810	59%
South East	62,860	32,810	24,730	-8,080	25%
South West	52,770	28,510	22,500	-6,010	21%
West Midlands	61,190	32,110	21,740	-10,370	32%
Yorkshire and The Humber	63,660	33,690	23,200	-10,490	32%
Grand Total	494,880	258,820	194,130	-64,690	25%

*Starts are rounded to the nearest 10

Y & H region starts by ward

Starts	Dataset			Start Diff	%
	2016/17, Collection R14	2016/17, Collection R06	2017/18, Collection R06		
SCD2 LEA UK Description					
Birmingham	12,540	6,670	4,380	-2,290	34%
Coventry	3,430	1,670	1,360	-310	19%
Dudley	3,270	1,720	1,160	-560	33%
Herefordshire	1,610	910	610	-300	33%
Sandwell	3,460	1,570	980	-590	38%
Shropshire	3,870	1,740	1,450	-290	17%
Solihull	2,490	2,030	820	-1,210	60%
Staffordshire	9,230	4,930	3,110	-1,820	37%
Stoke-on-Trent	3,050	1,600	1,080	-520	32%
Telford and Wrekin	2,120	1,000	700	-300	30%
Walsall	2,500	1,250	790	-460	47%
Warwickshire	5,690	2,850	2,140	-710	25%
Wolverhampton	2,560	1,300	1,200	-100	8%
Worcestershire	5,380	2,870	1,950	-920	32%
Grand Total	61,190	32,110	21,740	-10,370	32%

Y & H Breakdown		63,660 reported starts for Aug 16 – July 17		23,200 Reported starts for Aug 17 – Jan 18 (50% of the academic period)	
33,690 Reported starts same period last academic year: Aug 16 – Jan 17		32% decrease in starts in August 2017 to Jan 2018 compared to the previous year		of all apprenticeship starts in 2016/17 59% in Intermediate Level 35% in Advanced Level 6% in Higher apprenticeships	
Comparing August 2017 to January 2018 apprenticeship starts with the same period a year earlier:					
Under 19s Up 7%	19-24 up 1%	25+ down 8%	Intermediate level down 8%	Advanced level up 6%	Higher levels up 2%
8% BAME of reported starts from August 2017 to Jan 2018 compared to 7% for the same period last year (1% increase)			30,840 female reported starts (48% of total starts for 16/17)		46% female starts Aug 16 – Jan 17
					39% female starts Aug 17 – Jan 18 decrease 7%
6,250 LLD reported starts (9% of total starts for 16/17)		3,430 LLD reported starts (11% of total starts Aug 16 – Jan 17)		2,440 LLD reported starts (12% of total starts for Aug 17 – Jan 18 increase 1%)	