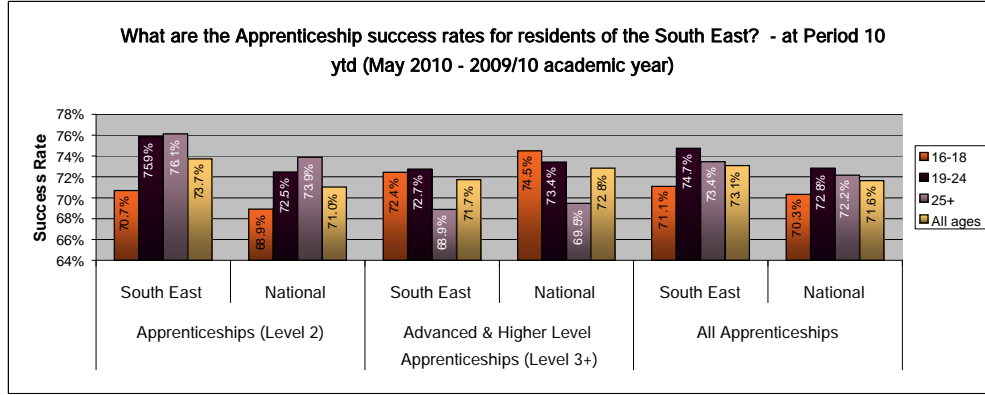
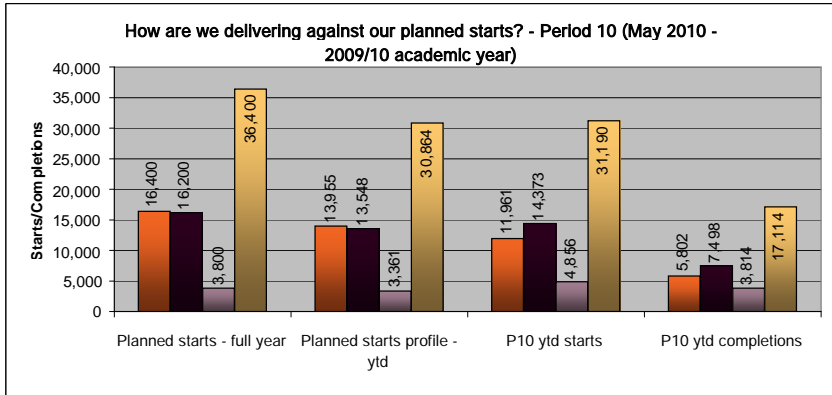


South East and National Apprenticeship Service summary report - Period 10 (May 2010 - 2009/10 academic year) - EXTERNAL



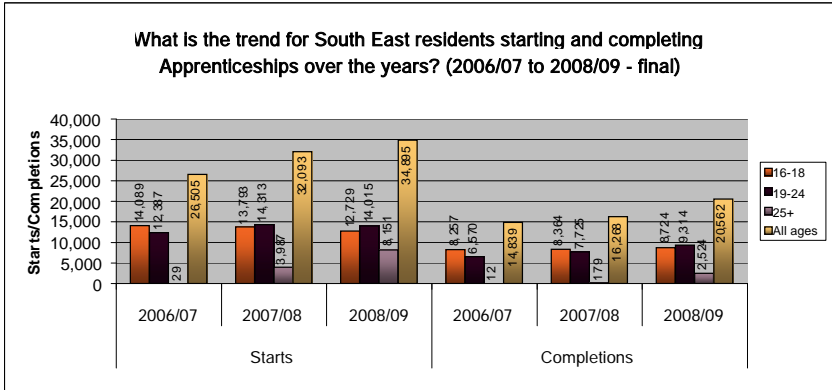
NB South East figures are based on provision delivered within the South East. This is in line with how success rate data is cut at a regional level for 08/09. Final period 15 success rates for 2008/09 showing - there is currently no success data available for 09/10

Age band	Planned Starts - ytd	Planned Starts profile - ytd	P10 ytd starts	% Delivery towards ytd Starts profile	towards full year Planned Starts	P10 ytd completions	Upload 10 starts 0809	0809 to 0910 change
16-18	16,400	13,955	11,961	85.7%	72.9%	5,802	10,831	10.4%
19-24	16,200	13,548	14,373	106.1%	88.7%	7,498	11,721	22.6%
25+	3,800	3,361	4,856	144.5%	127.8%	3,814	7,209	-32.6%
All ages	36,400	30,864	31,190	101.1%	85.7%	17,114	29,761	4.8%

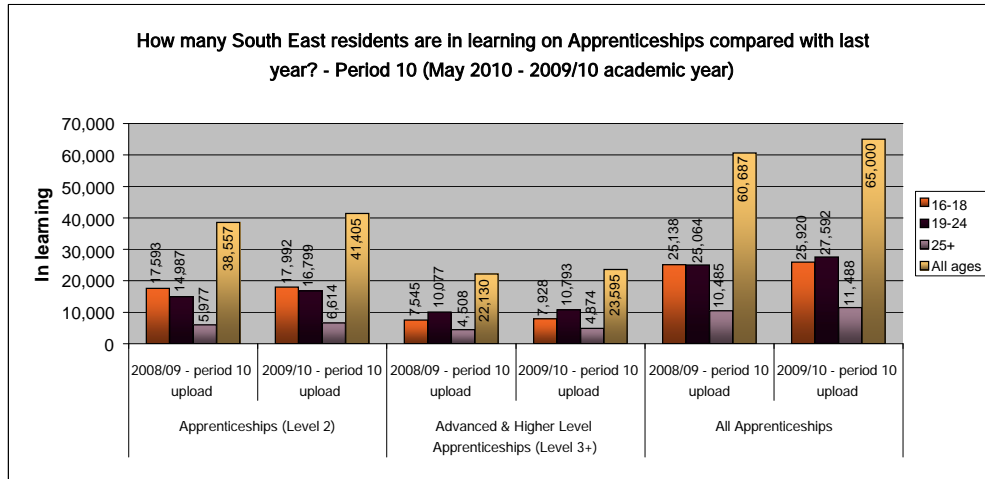
- Level 2 Apprenticeships are 0.8%, 3.4% & 2.2% higher for 16-18, 19-24 & 25+ respectively in the South East than the National average.
- Level 3 Apprenticeships are 2.1%, 0.7% & 0.6% lower for 16-18, 19-24 & 25+ respectively in the South East than the National average.
- When looking at the overall success rate for all levels the South East exceeds the National average for each age band.

NB Totals are year to date and are based on learners resident within the South East. There is no completions target for 09/10

- 16-18 starts are 10.4% (+1,130) higher at period 10 this year compared to the same upload period last year
- 16-18 starts are at 85.7% of the profiled P10 starts target
- 19-24 starts are 22.6% higher at period 10 (2,652) compared to the same upload period last year



- Starts for those aged 16-18 have fallen by 7.7% between 2007/08 (13,793) and 2008/09 (12,729 - final data).
- There has also been a reduction in adults aged 19-24 starting an Apprenticeship, within the same period, down by 2.1%. There has been significant demand for 25+ Apprenticeships with a 104.4% (+4,164) increase in starts from 2007/08 (3,987) to 2008/09 (8,151)
- The overall completion rate has increased year on year by 38.6% from 14,839 in 2006/07 to 20,562 in 2008/09



- There are 7.1% (+4,313) more South East resident learners in learning on Apprenticeships at period 10 in 2009/10 than the same period in 2008/09.
- 19-24 has risen by 10.1% (+2,528) & 25+ significantly by 9.6% (+1,003)
- 16-18 year olds in learning on all Apprenticeships at period 10 has increased by 3.1% (+782).
- This measure the total number of people who have been in learning at any time during the academic year - they may now have left

South East and National Apprenticeship Service summary report - Period 10 (May 2010 - 2009/10 academic year) - EXTERNAL

Local authority resident Apprenticeship starts with previous year comparison - Period 10 (May 2010 - 2009/10 academic year)

Local Authority	16 to 18			19 to 24			25+			All ages		
	2009/10 P10 ytd	2008/09 P10	0809 to 0910 % change	2009/10 P10 ytd	2008/09 P10	0809 to 0910 % change	2009/10 P10 ytd	2008/09 P10	0809 to 0910 % change	2009/10 P10 ytd	2008/09 P10	0809 to 0910 % change
Bracknell Forest	164	144	↑ 13.9%	194	130	↑ 49.2%	63	108	↓ -41.7%	421	382	↑ 10.2%
Brighton and Hove	211	212	↓ -0.5%	338	271	↑ 24.7%	105	195	↓ -46.2%	654	678	↓ -3.5%
Buckinghamshire	746	625	↑ 19.4%	746	595	↑ 25.4%	177	282	↓ -37.2%	1,669	1502	↑ 11.1%
East Sussex	696	651	↑ 6.9%	551	707	↓ -7.9%	205	381	↓ -46.2%	1,552	1739	↓ -10.8%
Hampshire	2,520	2,268	↑ 11.1%	3,607	2,686	↑ 34.3%	1,171	1,481	↓ -20.9%	7,298	6,435	↑ 13.4%
Isle of Wight	253	267	↓ -5.2%	333	291	↑ 14.4%	50	208	↓ -76.0%	636	766	↓ -17.0%
Kent	1,660	1,549	↑ 7.2%	1,629	1,306	↑ 24.7%	637	866	↓ -26.4%	3,926	3,721	↑ 5.5%
Medway	471	355	↑ 32.7%	586	431	↑ 36.0%	170	234	↓ -27.4%	1,227	1,020	↑ 20.3%
Milton Keynes	354	394	↓ -10.2%	359	332	↑ 8.1%	113	235	↓ -51.9%	826	961	↓ -14.0%
Oxfordshire	869	789	↑ 10.1%	858	721	↑ 19.0%	350	479	↓ -26.9%	2,077	1,989	↑ 4.4%
Portsmouth	217	160	↑ 35.6%	225	203	↑ 10.8%	56	185	↓ -69.7%	498	548	↓ -9.1%
Reading	202	190	↑ 6.3%	254	180	↑ 41.1%	89	114	↓ -21.9%	545	484	↑ 12.6%
Slough	154	131	↑ 17.6%	142	126	↑ 12.7%	79	113	↓ -30.1%	375	370	↑ 1.4%
Southampton	367	264	↑ 39.0%	357	314	↑ 13.7%	136	206	↓ -34.0%	860	784	↑ 9.7%
Surrey	1,071	937	↑ 14.3%	1,423	1,145	↑ 24.3%	686	780	↓ -12.1%	3,180	2,862	↑ 11.1%
West Berkshire	248	251	↓ -1.2%	257	200	↑ 28.5%	77	142	↓ -45.8%	582	593	↓ -1.9%
West Sussex	899	808	↑ 11.3%	1,029	988	↑ 4.1%	320	716	↓ -55.3%	2,248	2,512	↓ -10.5%
Windsor and Maidenhead	120	112	↑ 7.1%	176	112	↑ 57.1%	58	87	↓ -33.3%	354	311	↑ 13.8%
Wokingham	739	724	↑ 2.1%	1,209	983	↑ 23.0%	314	397	↓ -20.9%	2,262	2,104	↑ 7.5%
Unknown	0	0	↑ 0%	0	0	↑ 0%	0	0	↑ 0%	0	0	↑ 0%
South East region	11,961	10,831	↑ 10.4%	14,373	11,721	↑ 22.6%	4,856	7,209	↓ -32.6%	31,190	29,761	↑ 4.8%

NB Totals are year to date & cumulative and are based on learners resident in the region by home postcode.

- Regionally starts for 16-18 year olds are 10.4% (+1,130) higher at period 10 than the same period in 2008/09
- Portsmouth (+35.6% / + 57), Southampton (+39.0% / + 103) & Medway (+32.7% / + 116) are showing the greatest increase for 16-18 starts for the same period last year - all in excess of a 25% increase.
- Milton Keynes (-10.2% / -40), Isle of Wight (-5.2% / -14), West Berkshire (-1.2% / -3) & Brighton & Hove (-0.5% / -1) are the only Local Authorities with a decrease in 16-18 starts when comparing the same period in 2008/09.
- Reflecting reduced budgets 25+ starts are down by 32.6% (-2,353).

Local Authority performance against Progress Check Indicators

16 to 18 local authority planned starts / Progress Check Indicator (PCI) analysis			
Local Authority	PCI Target (Green)	PCI Target (Amber/Green)	Period 1 to 6 starts at upload 07 (PCI counts starts in periods 1 to 6)
Bracknell Forest	155	134	123
Brighton and Hove	223	194	178
Buckinghamshire	680	589	542
East Sussex	715	619	570
Hampshire	2,333	2,022	1,860
Isle of Wight	217	188	173
Kent	1,735	1,503	1,383
Medway	393	341	313
Milton Keynes	391	339	312
Oxfordshire	844	731	673
Portsmouth	186	161	148
Reading	190	165	152
Slough	143	124	114
Southampton	314	272	250
Surrey	944	818	753
West Berkshire	299	259	238
West Sussex	996	863	794
Windsor and Maidenhead	122	106	97
Wokingham	721	625	575
Unknown	0	0	0
South East region	11,601	10,053	9,248

NB Shaded colour shows level of PCI target achieved for this Local Authority Red = PCI not met

Green = Green PCI met Amber = Amber PCI met Plum = Amber/Green PCI met

- 5 Local Authorities at the period 07 upload have achieved the Amber PCI target for 16-18

Apprenticeship starts between Aug09 to Jan10 or periods 1 to 6.

- The remaining Local Authorities and the South East as a whole have not achieved the PCI targets

Local authority resident Apprenticeship completions with previous year comparison - Period 10 (May 2010 - 2009/10 academic year)

Local Authority	16-18			19-24			25+			All ages		
	2009/10 P10 ytd	2008/09 P10	0809 to 0910 % change	2009/10 P10 ytd	2008/09 P10	0809 to 0910 % change	2009/10 P10 ytd	2008/09 P10	0809 to 0910 % change	2009/10 P10 ytd	2008/09 P10	0809 to 0910 % change
Bracknell Forest	84	77	↑ 9.1%	90	74	↑ 21.6%	64	23	↑ 178.3%	238	174	↑ 36.8%
Brighton and Hove	92	122	↓ -24.6%	152	123	↑ 23.6%	87	32	↑ 171.9%	331	277	↑ 19.5%
Buckinghamshire	364	332	↑ 9.6%	423	300	↑ 41.0%	116	26	↑ 346.2%	903	658	↑ 37.2%
East Sussex	251	224	↑ 12.1%	365	289	↑ 26.3%	163	48	↑ 239.6%	779	561	↑ 38.9%
Hampshire	1,304	1,242	↑ 5.0%	1,852	1,544	↑ 19.9%	813	222	↑ 266.2%	3,969	3,008	↑ 31.9%
Isle of Wight	137	141	↓ -2.8%	174	246	↓ -29.3%	131	75	↑ 74.7%	442	462	↓ -4.3%
Kent	865	639	↑ 35.4%	782	724	↑ 8.0%	447	174	↑ 156.9%	2,094	1,537	↑ 36.2%
Medway	257	199	↑ 29.1%	334	254	↑ 31.5%	163	61	↑ 167.2%	754	514	↑ 46.7%
Milton Keynes	148	136	↑ 8.8%	156	183	↓ -14.8%	101	57	↑ 77.2%	405	376	↑ 7.7%
Oxfordshire	382	341	↑ 12.0%	417	404	↑ 3.2%	231	83	↑ 178.3%	1,030	828	↑ 24.4%
Portsmouth	111	80	↑ 38.8%	110	128	↓ -14.1%	75	26	↑ 188.5%	296	234	↑ 26.5%
Reading	79	64	↑ 23.4%	98	75	↑ 30.7%	52	24	↑ 116.7%	229	163	↑ 40.5%
Slough	66	66	↔ 0.0%	87	65	↑ 33.8%	47	42	↑ 11.9%	200	173	↑ 15.6%
Southampton	163	132	↑ 23.5%	178	148	↑ 20.3%	114	41	↑ 178.0%	455	321	↑ 41.7%
Surrey	474	436	↑ 8.7%	730	536	↑ 14.8%	448	193	↑ 132.1%	1,652	1,265	↑ 30.6%
West Berkshire	136	124	↑ 9.7%	131	113	↑ 15.9%	81	38	↑ 113.2%	348	275	↑ 26.5%
West Sussex	422	426	↓ -0.9%	540	490	↑ 10.2%	305	88	↑ 246.6%	1,267	1,004	↑ 26.2%
Windsor and Maidenhead	59	53	↑ 11.3%	111	72	↑ 54.2%	48	12	↑ 300.0%	218	137	↑ 59.1%
Wokingham	408	470	↓ -13.2%	768	469	↑ 63.8%	328	132	↑ 148.5%	1,504	1,071	↑ 40.4%
Unknown	0	0	↑ 0%	0	0	↑ 0%	0	0	↑ 0%	0	0	↑ 0%
South East region	5,802	5,304	↑ 9.4%	7,498	6,337	↑ 18.3%	3,814	1,397	↑ 173.0%	17,114	13,038	↑ 31.3%

NB Totals are year to date & cumulative and are based on learners resident in the region by home postcode

- Completions uploaded at period 10 continue to be considerably higher than the same period last year with an overall increase of 31.3% (+4,076) from 13,038 at upload 10 in 2008/09 to 17,114 in 2009/10.
- 16-18 completions are up by 9.4% (+ 498). 19-24 completions have increased by 18.3% (+1,161)
- Completions for Adult Apprenticeships have increased significantly since the same period last year largely due to the increased demand on this still relatively new strand

What are the Apprenticeship success rates for those who are resident in South East local Authorities? (2009/10 - May 2010 period 10)

Local Authority	16-18	19-24	25+
Bracknell Forest	77.5%	71.2%	73.6%
Brighton and Hove	59.0%	63.2%	60.0%
Buckinghamshire	72.9%	71.2%	71.1%
East Sussex	60.1%	70.1%	69.6%
Hampshire	74.6%	77.0%	76.0%
Isle of Wight	65.9%	74.6%	83.1%
Kent	71.2%	72.9%	74.0%
Medway	78.7%	84.8%	78.4%
Milton Keynes	62.9%	68.5%	66.4%
Oxfordshire	75.5%	75.2%	67.9%
Portsmouth	75.8%	71.9%	66.4%
Reading	75.8%	76.7%	63.4%
Slough	74.4%	75.9%	69.5%
Southampton	66.3%	66.9%	78.3%
Surrey	68.0%	74.5%	74.2%
West Berkshire	74.0%	74.5%	80.2%
West Sussex	65.5%	70.9%	70.7%
Windsor and Maidenhead	66.3%	77.0%	74.2%
Wokingham	75.0%	85.6%	84.9%
South East region	71.1%	74.7%	73.4%
National	70.3%	72.8%	72.2%

NB This success rate is based on learner residency from their home postcode

Blue indicates on or above regional average - red below regional average