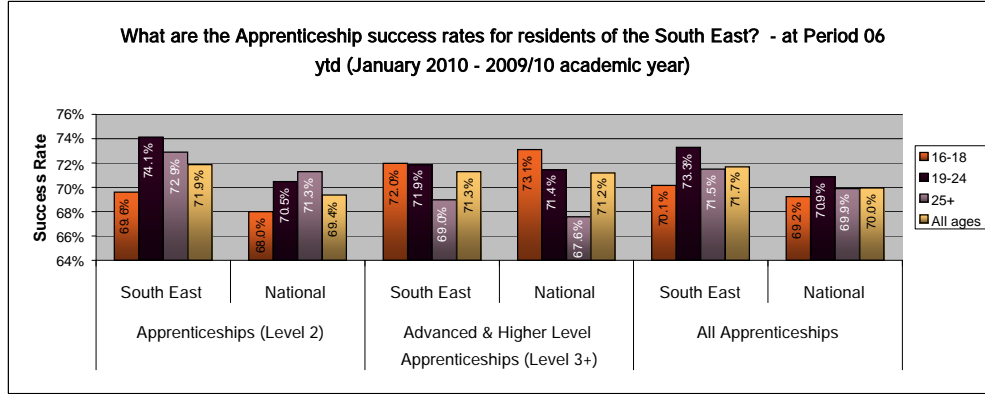
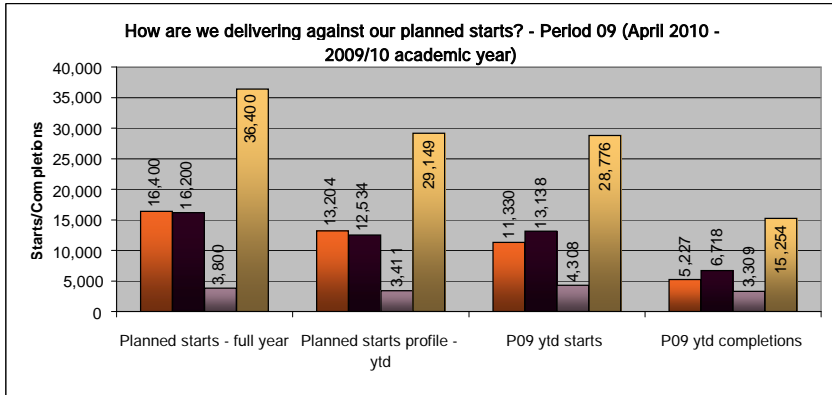


# South East and National Apprenticeship Service summary report - Period 09 (April 2010 - 2009/10 academic year) - EXTERNAL



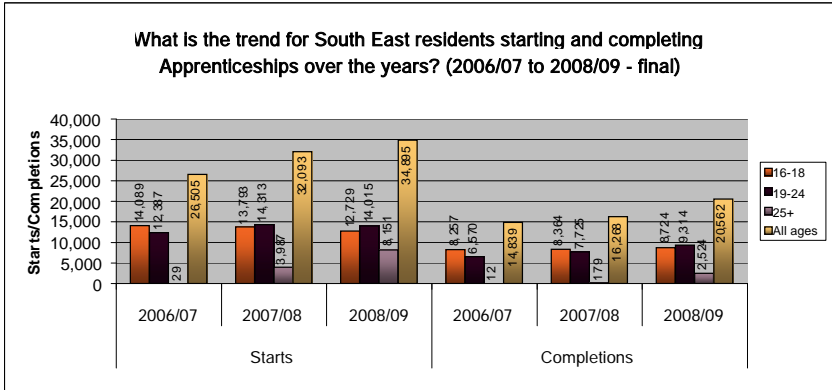
NB South East figures are now based on residents of the South East. This has changed from delivery location and reflects National developments

Age band	Planned Starts - ytd	Planned Starts profile - ytd	P09 ytd starts	% Delivery towards ytd Starts profile	towards full year Planned Starts	P09 ytd completions	Upload 09 starts 0809	0809 to 0910 change
16-18	16,400	13,204	11,330	85.8%	69.1%	5,227	10,244	10.6%
19-24	16,200	12,534	13,138	104.8%	81.1%	6,718	10,780	21.9%
25+	3,800	3,411	4,308	126.3%	113.4%	3,309	6,771	-36.4%
All ages	36,400	29,149	28,776	98.7%	79.1%	15,254	27,795	3.5%

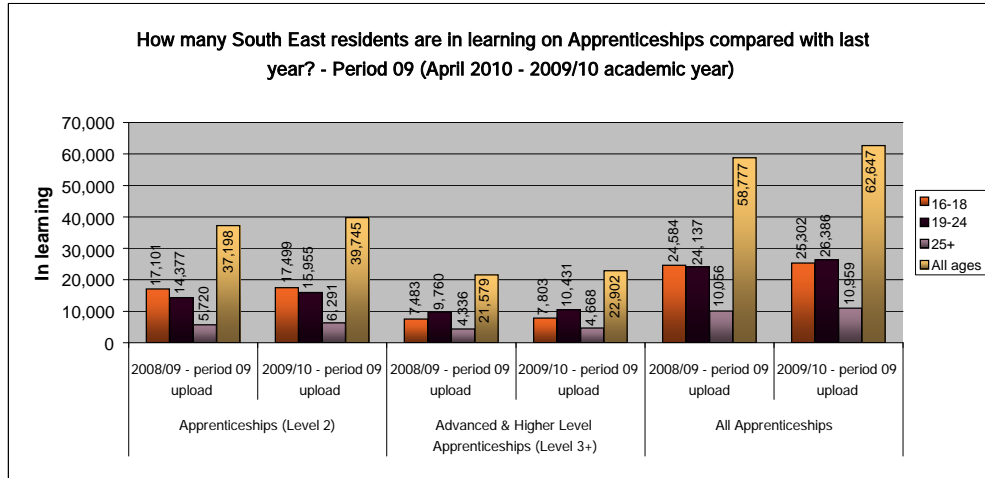
- The South East overall (level 2 & 3 combined) exceeds the National average Apprenticeship success rate across all age bands and all levels in 2009/10
- Level 2 Apprenticeships were 0.5%, 1.9% & 2.4% higher for 16-18, 19-24 & 25+ respectively in the South East than the National average.
- Level 3 Apprenticeships were 2.0%, 0.2% & 3.5% higher for 16-18, 19-24 & 25+ respectively in the South East than the National average.

NB Totals are year to date and are based on learners resident within the South East. There is no completions target for 09/10

- 16-18 starts are 10.6% (+1,086) higher at period 09 this year compared to the same upload period last year
- 16-18 starts are at 85.8% of the profiled P09 starts target
- 19-24 starts are 21.9% higher at period 09 (2,358) compared to the same upload period last year



- Starts for those aged 16-18 have fallen by 7.7% between 2007/08 (13,793) and 2008/09 (12,729 - final data).
- There has also been a reduction in adults aged 19-24 starting an Apprenticeship, within the same period, down by 2.1%. There has been significant demand for 25+ Apprenticeships with a 104.4% (+4,164) increase in starts from 2007/08 (3,987) to 2008/09 (8,151)
- The overall completion rate has increased year on year by 38.6% from 14,839 in 2006/07 to 20,562 in 2008/09



- There are 6.6% (+3,870) more South East resident learners in learning on Apprenticeships at period 09 in 2009/10 than the same period in 2008/09.
- 19-24 has risen by 9.3% (+2,249) & 25+ significantly by 9.0% (+903)
- 16-18 year olds in learning on all Apprenticeships at period 09 has increased by 2.9% (+718) though this is down on the 3.3% (+777) period 08 position.
- This measure the total number of people who have been in learning at any time during the academic year - they may now have left

## South East and National Apprenticeship Service summary report - Period 09 (April 2010 - 2009/10 academic year) - EXTERNAL

### Local authority resident Apprenticeship starts with previous year comparison - Period 09 (April 2010 - 2009/10 academic year)

Local Authority	16 to 18			19 to 24			25+			All ages		
	2009/10 P09 ytd	2008/09 P09	0809 to 0910 % change	2009/10 P09 ytd	2008/09 P09	0809 to 0910 % change	2009/10 P09 ytd	2008/09 P09	0809 to 0910 % change	2009/10 P09 ytd	2008/09 P09	0809 to 0910 % change
Bracknell Forest	156	138	↑ 13.0%	188	127	↑ 48.0%	59	100	↓ -41.0%	403	365	↑ 10.4%
Brighton and Hove	199	196	↑ 1.5%	292	256	↑ 14.1%	92	189	↓ -51.3%	583	641	↓ -9.0%
Buckinghamshire	688	606	↑ 13.5%	701	556	↑ 26.1%	159	259	↓ -38.6%	1,548	1421	↑ 8.9%
East Sussex	666	615	↑ 8.3%	594	670	↓ -11.3%	171	368	↓ -53.5%	1,431	1653	↓ -13.4%
Hampshire	2,375	2098	↑ 13.2%	3,262	2426	↑ 34.5%	1,027	1387	↓ -26.0%	6,664	5911	↑ 12.7%
Isle of Wight	239	249	↓ -4.0%	304	267	↑ 13.9%	46	207	↓ -77.8%	589	723	↓ -18.5%
Kent	1,581	1465	↑ 7.9%	1,483	1216	↑ 22.0%	559	828	↓ -32.5%	3,623	3509	↑ 3.2%
Medway	446	337	↑ 32.3%	531	390	↑ 36.2%	155	216	↓ -28.2%	1,132	943	↑ 20.0%
Milton Keynes	338	380	↓ -11.1%	341	312	↑ 9.3%	97	221	↓ -56.1%	776	913	↓ -15.0%
Oxfordshire	846	757	↑ 11.8%	801	666	↑ 20.3%	306	454	↓ -32.6%	1,953	1877	↑ 4.0%
Portsmouth	197	153	↑ 28.8%	207	185	↑ 11.9%	52	182	↓ -71.4%	456	520	↓ -12.3%
Reading	196	182	↑ 7.7%	231	157	↑ 47.1%	81	102	↓ -20.6%	508	441	↑ 15.2%
Slough	145	127	↑ 14.2%	132	117	↑ 12.8%	74	109	↓ -32.1%	351	353	↓ -0.6%
Southampton	355	261	↑ 36.0%	338	298	↑ 13.4%	130	193	↓ -32.6%	823	752	↑ 9.4%
Surrey	999	869	↑ 15.0%	1,295	1050	↑ 23.3%	619	723	↓ -14.4%	2,913	2642	↑ 10.3%
West Berkshire	239	241	↓ -0.8%	230	192	↑ 19.8%	72	120	↓ -40.0%	541	553	↓ -2.2%
West Sussex	853	784	↑ 8.8%	968	930	↑ 4.1%	278	677	↓ -58.9%	2,099	2391	↓ -12.2%
Windsor and Maidenhead	120	108	↑ 11.1%	165	99	↑ 66.7%	52	87	↓ -40.2%	337	294	↑ 14.6%
Wokingham	692	678	↑ 2.1%	1,075	866	↑ 24.1%	279	349	↓ -20.1%	2,046	1893	↑ 8.1%
Unknown	0	0	↑ 0%	0	0	↑ 0%	0	0	↑ 0%	0	0	↑ 0%
<b>South East region</b>	<b>11,330</b>	<b>10,244</b>	<b>↑ 10.6%</b>	<b>13,138</b>	<b>10,780</b>	<b>↑ 21.9%</b>	<b>4,308</b>	<b>6,771</b>	<b>↓ -36.4%</b>	<b>28,776</b>	<b>27,795</b>	<b>↑ 3.5%</b>

NB Totals are year to date & cumulative and are based on learners resident in the region by home postcode.

- Regionally starts for 16-18 year olds are 10.6% (+1,086) higher at period 09 than the same period in 2008/09 with a significant impact made from the AGE initiative
- Portsmouth (+28.8% / + 44), Southampton (+36.0% / + 94) & Medway (+32.3% / + 109) are showing the greatest increase for 16-18 starts for the same period last year - all in excess of a 25% increase.
- Milton Keynes (-11.1% / -42), Isle of Wight (-4.0% / -10) and West Berkshire (-8% / -2) are the only Local Authorities with a decrease in 16-18 starts when comparing the same period in 2008/09
- Reflecting reduced budgets 25+ starts are down by 36.4% (-2,463).

### Local Authority performance against Progress Check Indicators

16 to 18 local authority planned starts / Progress Check Indicator (PCI) analysis			
PCI Target (Green)	PCI Target (Amber/Green)	PCI Target (Amber)	Period 1 to 6 starts at upload 07 (PCI counts starts in periods 1 to 6)
155	134	123	115
223	194	178	136
680	589	542	496
715	619	570	501
2,333	2,022	1,860	1,844
217	188	173	170
1,735	1,503	1,383	1,184
393	341	313	337
391	339	312	237
844	731	673	665
186	161	148	150
190	165	152	153
143	124	114	121
314	272	250	270
944	818	753	710
299	259	238	177
996	863	794	616
122	106	97	91
721	625	575	495
0	0	0	0
<b>11,601</b>	<b>10,063</b>	<b>9,248</b>	<b>8,468</b>

NB Shaded colour shows level of PCI target achieved for this Local Authority Red = PCI not met

Green = Green PCI met Amber = Amber PCI met Plum = Amber/Green PCI met

- 5 Local Authorities at the period 07 upload have achieved the Amber PCI target for 16-18 Apprenticeship starts between Aug09 to Jan10 or periods 1 to 6.
- The remaining Local Authorities and the South East as a whole have not achieved the PCI targets

### Local authority resident Apprenticeship completions with previous year comparison - Period 09 (April 2010 - 2009/10 academic year)

Local Authority	16-18			19-24			25+			All ages		
	2009/10 P09 ytd	2008/09 P09	0809 to 0910 % change	2009/10 P09 ytd	2008/09 P09	0809 to 0910 % change	2009/10 P09 ytd	2008/09 P09	0809 to 0910 % change	2009/10 P09 ytd	2008/09 P09	0809 to 0910 % change
Bracknell Forest	75	70	↑ 7.1%	84	69	↑ 21.7%	46	14	↑ 228.6%	205	153	↑ 34.0%
Brighton and Hove	73	111	↓ -34.2%	132	112	↑ 17.9%	72	26	↑ 176.9%	277	249	↑ 11.2%
Buckinghamshire	337	286	↑ 17.8%	379	271	↑ 39.9%	102	19	↑ 436.8%	818	576	↑ 42.0%
East Sussex	228	202	↑ 12.9%	323	259	↑ 24.7%	140	40	↑ 250.0%	691	501	↑ 37.9%
Hampshire	1,195	1089	↑ 9.7%	1,703	1368	↑ 24.5%	691	187	↑ 269.5%	3,589	2644	↑ 35.7%
Isle of Wight	128	130	↓ -1.5%	165	224	↓ -26.3%	118	68	↑ 73.5%	411	422	↓ -2.6%
Kent	773	565	↑ 36.8%	699	664	↑ 5.3%	402	149	↑ 169.8%	1,874	1378	↑ 36.0%
Medway	231	183	↑ 26.2%	290	235	↑ 23.4%	140	57	↑ 145.6%	661	475	↑ 39.2%
Milton Keynes	134	124	↑ 8.1%	148	161	↓ -8.1%	87	35	↑ 148.6%	369	320	↑ 15.3%
Oxfordshire	352	300	↑ 17.3%	372	358	↑ 3.9%	208	65	↑ 220.0%	932	723	↑ 28.9%
Portsmouth	103	71	↑ 45.1%	100	120	↓ -16.7%	62	21	↑ 195.2%	265	212	↑ 25.0%
Reading	70	55	↑ 27.3%	85	65	↑ 30.8%	46	22	↑ 109.1%	201	142	↑ 41.5%
Slough	61	63	↓ -3.2%	81	60	↑ 35.0%	43	35	↑ 22.9%	185	158	↑ 17.1%
Southampton	153	118	↑ 29.7%	156	125	↑ 24.8%	102	31	↑ 229.0%	411	274	↑ 50.0%
Surrey	423	394	↑ 7.4%	535	576	↑ 10.2%	385	158	↑ 143.7%	1,443	1128	↑ 27.9%
West Berkshire	132	113	↑ 16.8%	121	107	↑ 13.1%	69	35	↑ 97.1%	322	255	↑ 26.3%
West Sussex	365	359	↑ 1.7%	472	427	↑ 10.5%	273	75	↑ 264.0%	1,110	861	↑ 28.9%
Windsor and Maidenhead	56	49	↑ 14.3%	98	67	↑ 46.3%	47	11	↑ 327.3%	201	127	↑ 58.3%
Wokingham	338	412	↓ -18.0%	675	413	↑ 63.4%	276	109	↑ 153.2%	1,289	934	↑ 38.0%
Unknown	0	0	↑ 0%	0	0	↑ 0%	0	0	↑ 0%	0	0	↑ 0%
<b>South East region</b>	<b>5,227</b>	<b>4,694</b>	<b>↑ 11.4%</b>	<b>6,718</b>	<b>5,681</b>	<b>↑ 18.3%</b>	<b>3,309</b>	<b>1,167</b>	<b>↑ 186.0%</b>	<b>16,254</b>	<b>11,532</b>	<b>↑ 32.3%</b>

NB Totals are year to date & cumulative and are based on learners resident in the region by home postcode

- Completions uploaded at period 09 continue to be considerably higher than the same period last year with an overall increase of 32.3% (+3,722) from 11,532 at upload 09 in 2008/09 to 15,254 in 2009/10.
- 16-18 completions are up by 11.4% (+ 533). 19-24 completions have increased by 18.3% (+1,037)
- Completions for Adult Apprenticeships have increased significantly since the same period last year largely due to the increased demand on this still relatively new strand

### What are the Apprenticeship success rates for those who are resident in South East local Authorities? (2009/10 - period 06)

Local Authority	16-18	19-24	25+
Bracknell Forest	73.7%	73.1%	56.4%
Brighton and Hove	59.4%	58.9%	62.3%
Buckinghamshire	69.7%	70.0%	66.7%
East Sussex	60.3%	68.6%	57.5%
Hampshire	73.0%	75.2%	75.2%
Isle of Wight	66.7%	75.9%	82.4%
Kent	69.2%	73.3%	72.8%
Medway	77.0%	83.8%	76.2%
Milton Keynes	64.7%	64.4%	58.2%
Oxfordshire	73.4%	73.7%	68.6%
Portsmouth	74.0%	73.6%	76.7%
Reading	79.2%	76.9%	56.1%
Slough	72.3%	72.4%	73.2%
Southampton	68.2%	59.6%	66.7%
Surrey	66.5%	73.5%	72.0%
West Berkshire	75.0%	73.9%	84.1%
West Sussex	65.4%	68.0%	69.6%
Windsor and Maidenhead	62.3%	70.7%	74.2%
Wokingham	78.9%	84.8%	85.0%
<b>South East region</b>	<b>70.1%</b>	<b>73.3%</b>	<b>71.6%</b>
<b>National</b>	<b>69.2%</b>	<b>70.9%</b>	<b>69.9%</b>

NB This success rate is based on learner residency from their home postcode

Blue indicates on or above regional average - red below regional average