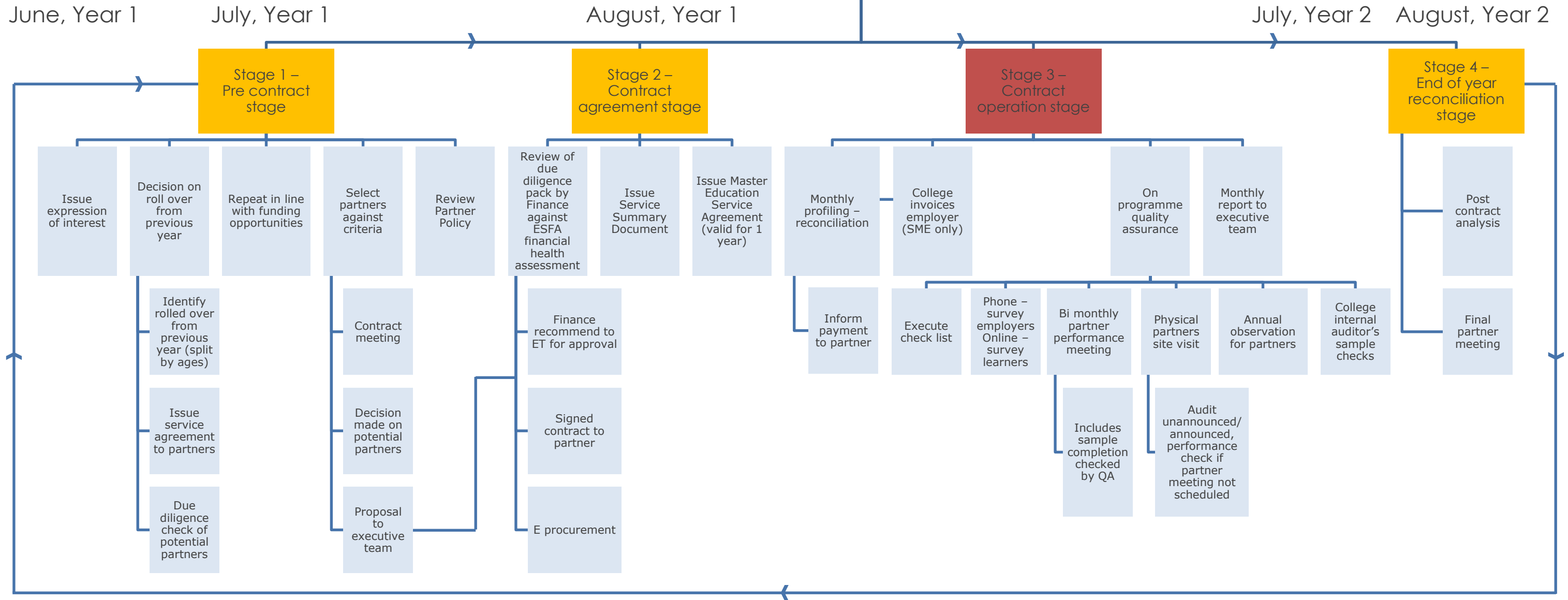


Sub-contracting process overview

Applies to
 Pre April 2017 Contracts (Rollovers)
 May 2017 SME New Partners (August →)
 May 2017 SME Existing Partners* (August →)
*Extension of current contract applies for May-July 2017



Key

- Low Risk
- Medium Risk
- High Risk

SFA Due Diligence

- Biannual sub-contract declaration – TBC
- Quarterly declaration against funding guidance requirements
- Steer on percentage partnership delivery
- Share risk evaluation information with other College lead partners via Principals' network

External Factors

- Change in funding
- Change in government priority
- AS requirements
- Benchmarking activities
- QAR trend data, national averages and minimum levels of performance